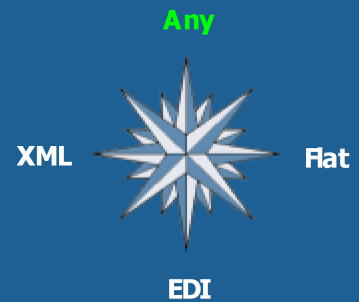


Jst A2A Converter

Any-to-Any Business Document Converter

1.3

Brochure



A2A Converter (A2AC)

A2AC is a new generation business document converter which benefits from most recent innovations in the field of data mapping and translation.

It allows to map documents from real samples of the source and target document models or by generating complete prototypical instances of each model.

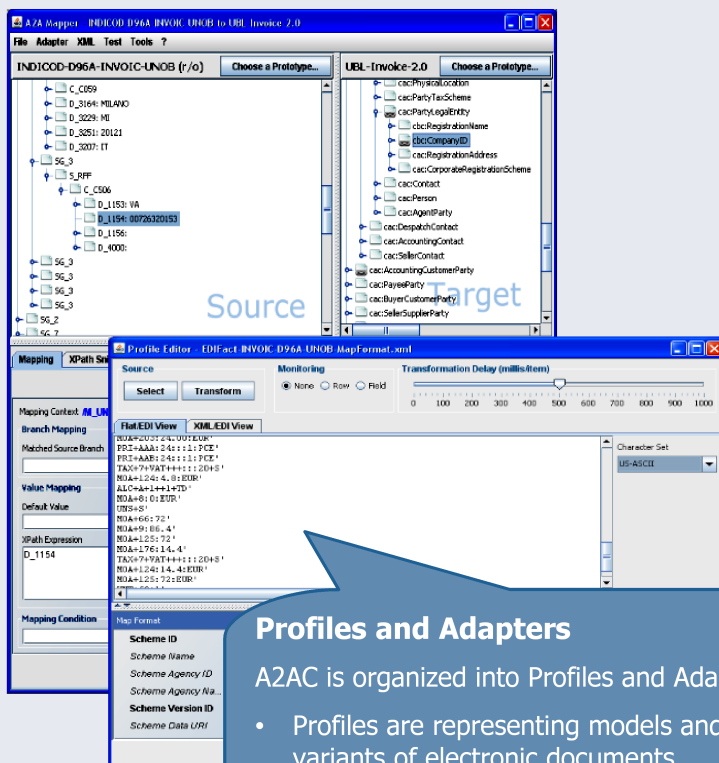
The mapping tool is visual, driven by context and assisted.

Code snippets (parameterised expressions) can be used for common mapping occurrences and new snippets can be directly created by the user.



Why using A2AC ?

- A2AC is designed for today's SMEs required to rapidly adapt their organizations to new standards and to meet partner's requirements
- The conversion engine is bundled with a development, administration and deployment tool (A2A-Mapper) composed by:
 - ✓ design and maintenance of document models and their profiles
 - ✓ design, maintenance and deployment of conversion adapters
 - ✓ parsing simulator for flat or EDI files
 - ✓ prototypical instances generator from any model/profile
 - ✓ Test environment



Profiles and Adapters

A2AC is organized into Profiles and Adapters:

- Profiles are representing models and their variants of electronic documents
- Conversion Adapters are realized by mapping two profiles



JAVEST A2A Converter

<http://www.javest.com/products/A2AConverter>

For more information: info@javest.com

The following open standards are used:

√ W3C DOM 3.0	√ OASIS UBL 2.x
√ W3C XPath 2.0	√ OASIS Genericcode 1.0
√ W3C XSLT 2.0	
√ W3C XML Schema 1.x	

How coded values are handled ?

- A2AC natively supports the Genericcode 1.0 OASIS Standard for handling cross-reference tables that may be required to translate coded values that could differ between systems
- Any other xml based code list format can be used
- Code lists are stored separately from the adapter (mappings) for facilitating their reuse across different adapters

UBL Ready !

A2AC is proposed as a simple integration instrument, this reason it promotes the preferential use, where possible, of open and international standards

UBL (Universal Business Language) represents a superlative *lingua franca* for the e-Business designed to support most common business practices in the international trade.

For this purpose A2AC includes all UBL 2.x document models and suggests their usage for maximize the interoperability.

Where A2AC has been used ?

- Distributed in Spain by Invinet Sistemas and integrated in their B2B-Router solution
- Distributed in Italy by B-K (Brain & Knowledge)
- A2AC is a plug-in of the B2B Connector (B2BC) provided by CECID (HK)
- Used in Italy in a pilot project for the two-way conversion of the EANCOM INVOIC (UN/EDIFact D96A) to/from UBL-Invoice-2.0
- Used in Italy to design conversion adapters between the CEN WS/BII European Invoice (see PEPPOL project) and the invoice of the Italian Public Administration

Which formats are supported ?

A2AC is not binded to any format in particular:

- it is a parser/serializer for either structured and semi-structured business documents
- it natively handles any model based on W3C XML Schema
- any proprietary model can be defined using an integrated profile designer based on an open and generic meta-model named "Genericmap"
- ISO XML/EDI is internally used as an intermediate format to facilitate the mapping and conversion of proprietary and EDI formats (EDIFact, X12) with anything else

Integration

A simple API is provided to facilitate its integration into Java™ projects

It can be invoked from the command-line and thus from any script

Conversion adapters can be associated to any outbound/inbound channel on the file system.

Servizi

Consulting

Assistance in planning EDI systems and application integration.

Implementation

Assistance is ensured to create EDI implementations using international and open standards as well as customer's mapping specifications and reverse engineering.

Training

On-site training is provided to guide the customer from the startup to production.